



# Maryland Recycling Network Webinar: EPA's Food Recovery Challenge



Luke Wolfgang, USEPA  
Sustainability Coordinator  
[Wolfgang.luke@epa.gov](mailto:Wolfgang.luke@epa.gov)  
May 14, 2019



# Welcome *and a little admin...*

Your Moderator: **Peter Houstle** - MRN Executive Director

Your Presenter: **Luke Wolfgang**, USEPA Sustainability Coordinator

Mark Your Calendars:

- Annual Conference – Tuesday, June 11, 2019 – BWI Marriott
- How2Recycle Webinar – Tuesday, July 9, 2019 - 11:30am

Admin:

- Post questions in chat box (Alt-H)
- Recording will be posted on MRN website

**Not a Member? Join Today to Support Recycling in Maryland!**

[www.marylandrecyclingnetwork.org](http://www.marylandrecyclingnetwork.org)



# Presentation Overview

- National goal to reduce food waste to landfill by 50% by 2030
  - Why Food Waste? How to reach the goal?
- Overview of EPA's Food Recovery Challenge (FRC)
  - Benefits to Business's and Institutions, and MD Award Winners
- EPA tools and resources for local governments/recycling coordinators



## US National Goal to Reduce Food Waste by 50% by 2030

- EPA/USDA launch 2030 Champions program
- EPA/USDA/FDA Launched Interagency Strategy





## Quick Poll





APRIL IS "WINNING ON REDUCING FOOD WASTE" MONTH



30-40% OF ALL  
AVAILABLE **FOOD**  
IN THE U.S. IS  
**WASTED**

Do your part. Join your federal partners  
in reducing food waste.



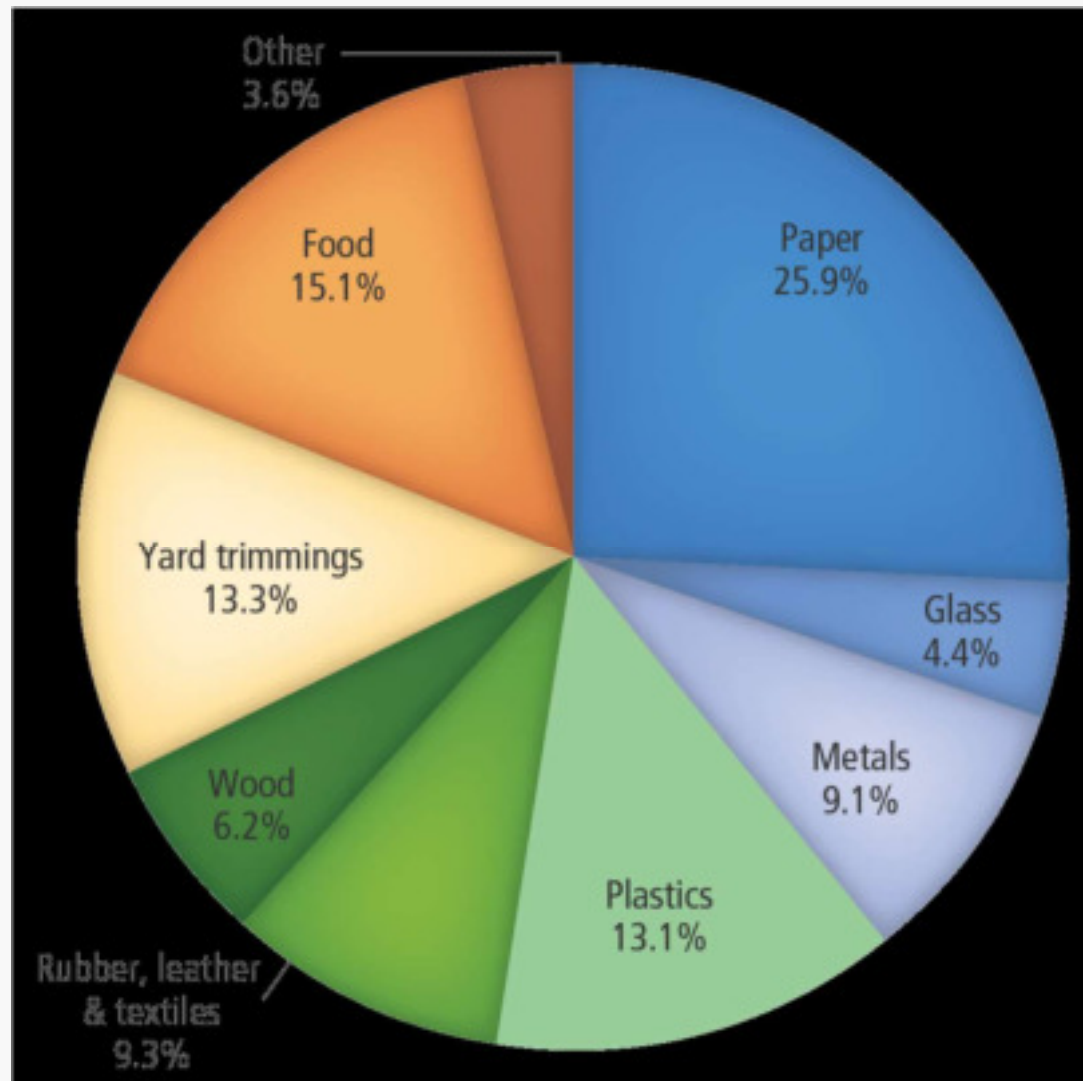


**Americans waste  
enough  
food to fill  
the Rose  
Bowl every  
day.** (Bloom 2007)





# Waste Generated in 2015





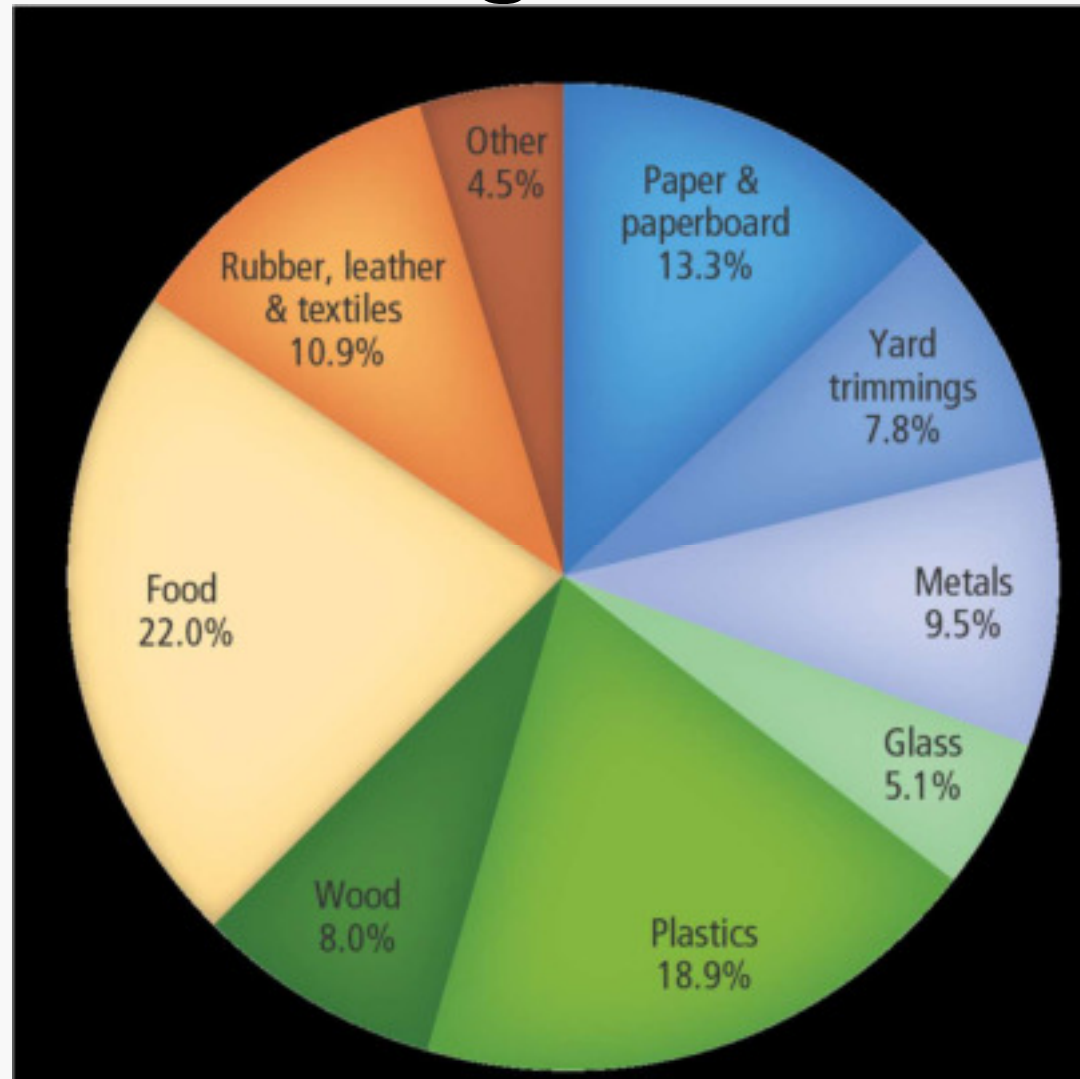


## Quick Poll





# Waste Reaching Landfills in 2015





# Food Waste Impacts the Economy

Financially, wasted food costs America **more than \$100 billion** annually. (Bloom, 2007)

- Disposal cost of municipal waste management
- Over purchasing costs
- Cost of lost energy





# Quick Poll





## It impacts Society

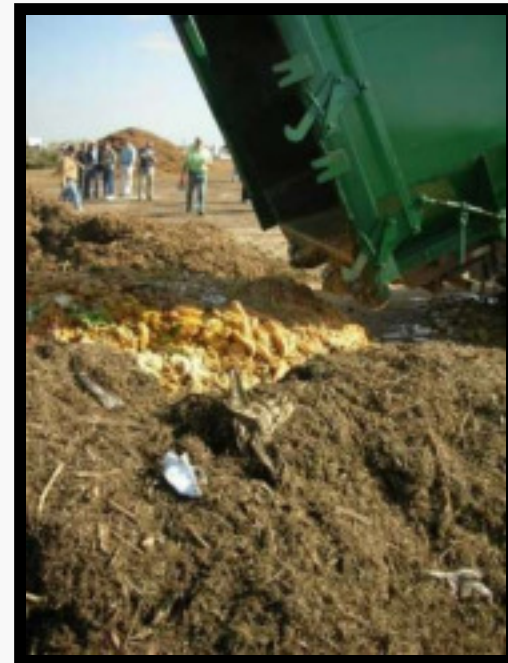
- **40 million Americans**, or 13% of American households, are food insecure according to Feeding America
- Food insecurity can increase the likelihood for an individual to have **major health concerns.**





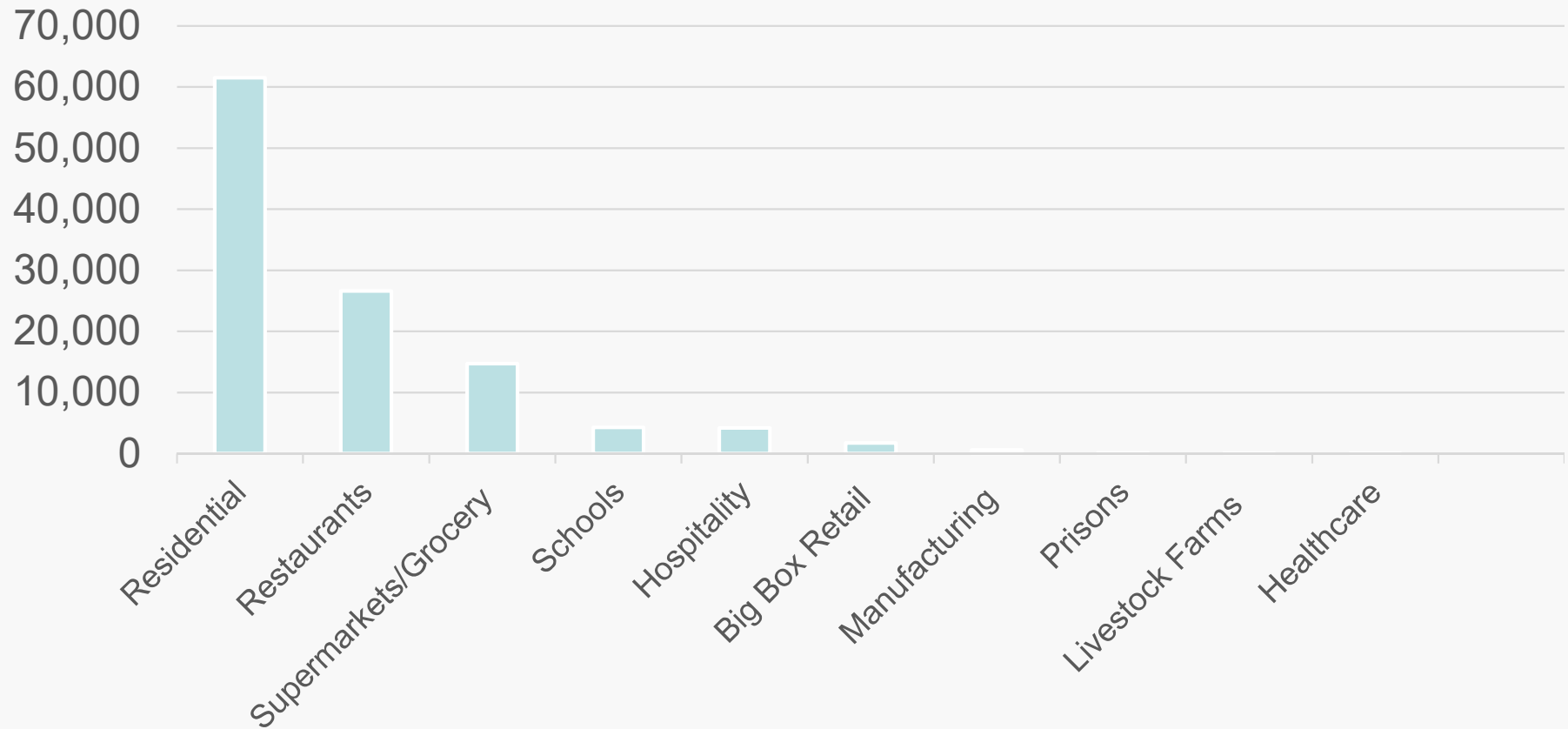
# It Impacts the Environment

- Food that enters a landfill produces methane, a greenhouse gas with **21 times** the warming potential of CO<sub>2</sub>



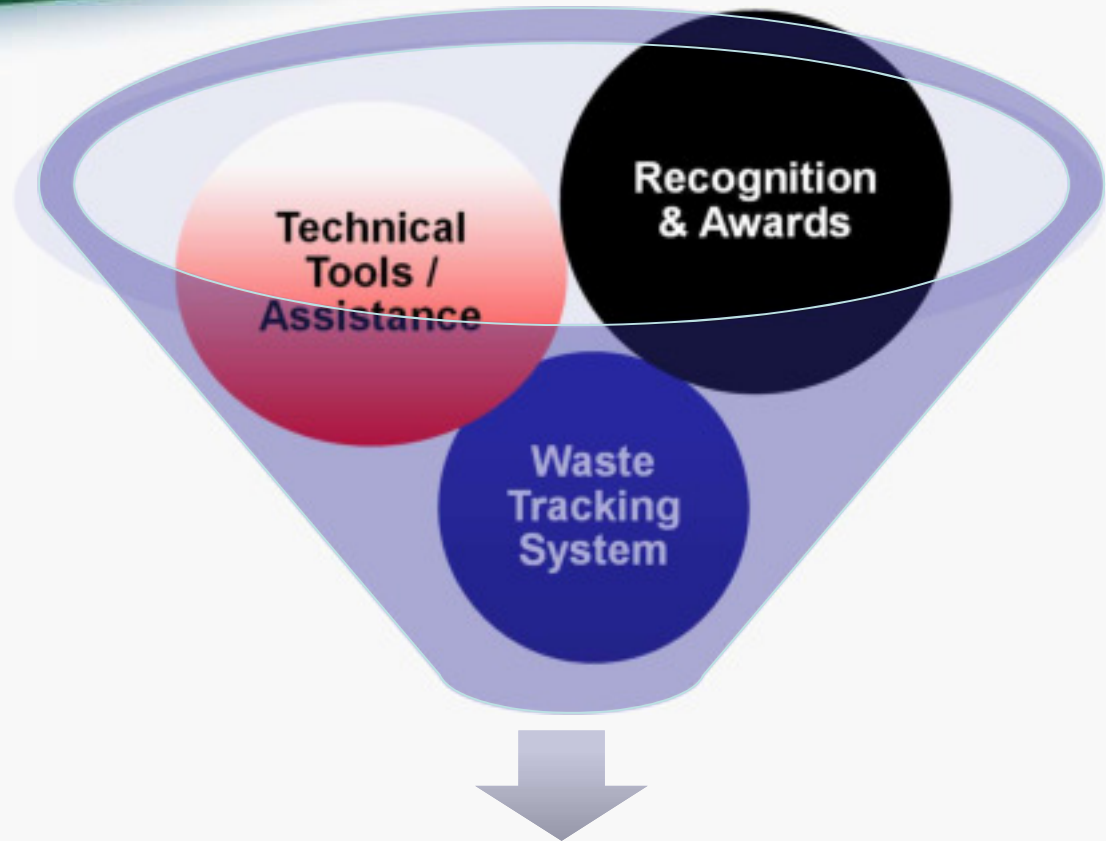


# Prince George's County, MD Tons of Wasted Food





# **EPA's Food Recovery Challenge: A Tool to Reduce Food Waste**



**Cost Savings, Brand Recognition,  
Community Involvement, and  
Reduce Environmental Impact**





## Current FRC Partners:

- Over 1000 Participants/Endorsers Nationwide
- Key Sectors include Grocery Stores, Sports Stadiums, Universities, Hotels, and Restaurants
- MD Participants/Endorsers include Towson University, Food Recovery Network, Sodexo, FoodBridge (UEmpowerofMD), Community Food Rescue to name a few...



## Joining the FRC is as easy as 1,2,3...

1. Set an Annual Goal  
(Prevention, Donation,  
Composting)
2. Report Annual Results  
(lbs/tons)
3. Be eligible for  
Awards/Recognition





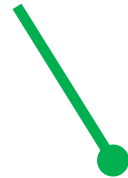
# Food Recovery Hierarchy

[www.epa.gov/foodscraps](http://www.epa.gov/foodscraps)

Reduce



Green House Gas



Generate

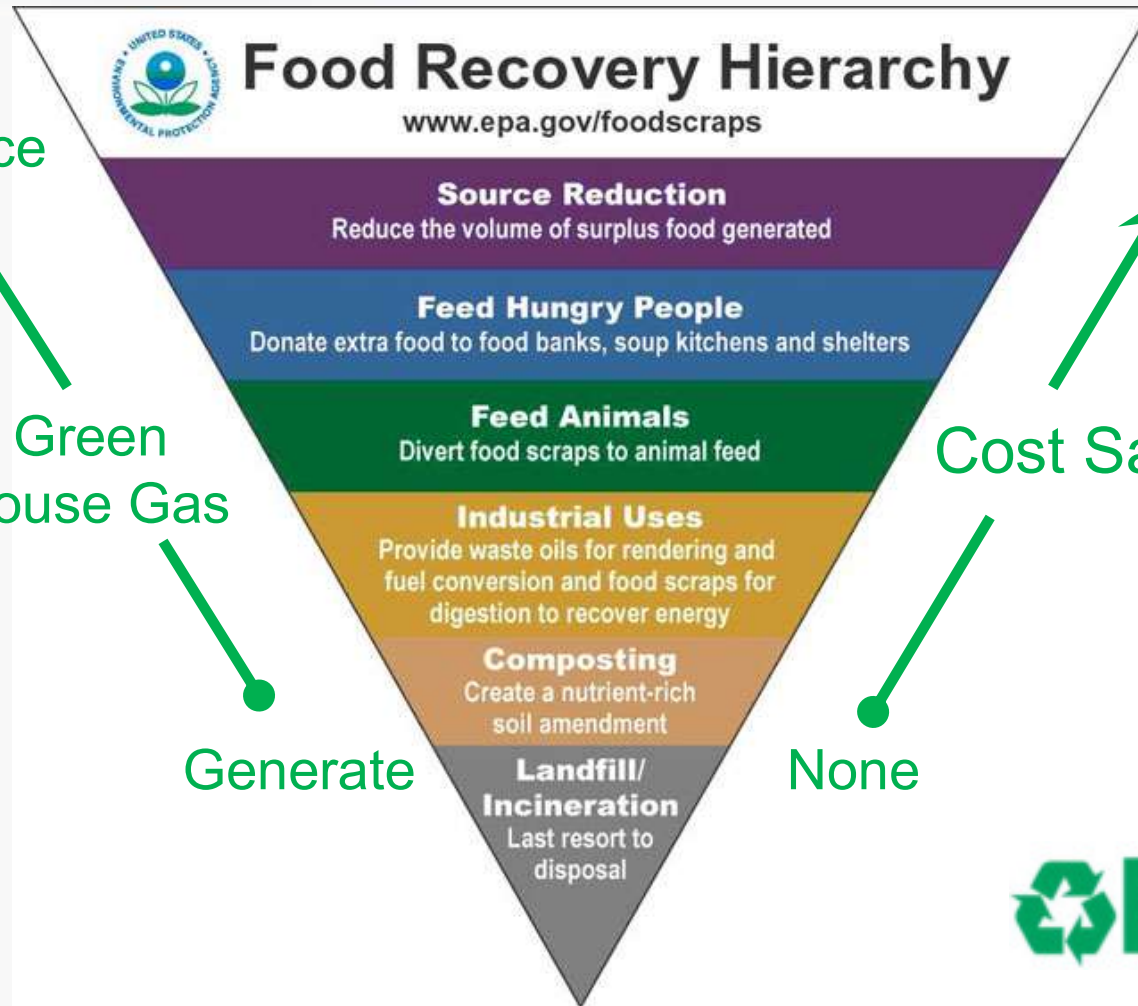
Max



Cost Savings



None





# Source Reduction = \$ Savings





# Food to Feed People





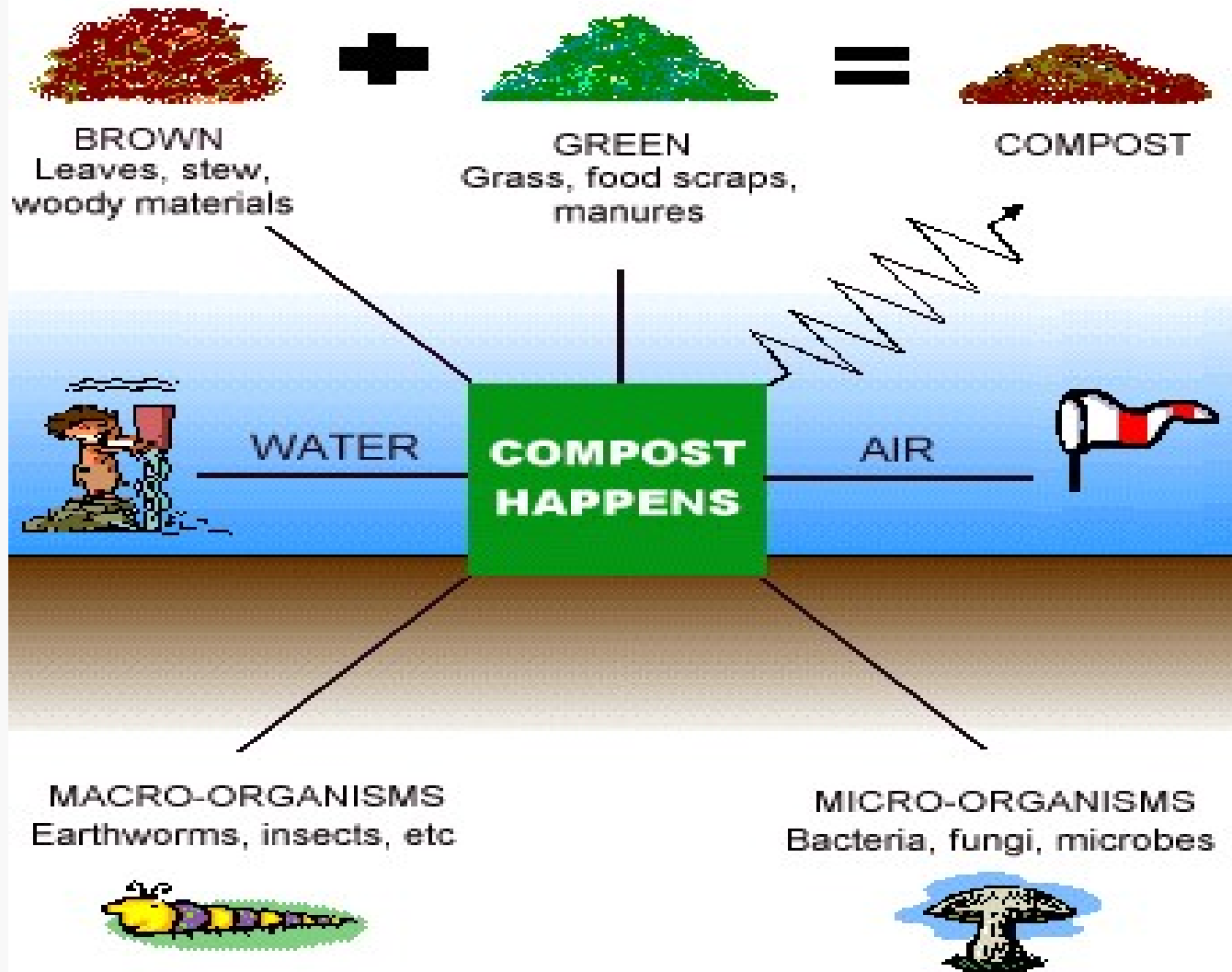
# Food to Feed Animals





# Food to Feed the Soil









## Quick Poll





# 2018 FRC National Endorser of the Year: Sodexo



**EPA Land** @EPALand · Apr 26

We were glad to join @EPARegion3 & @SodexoUSA to conduct a food waste audit at the café at Sodexo's HQs. The Food Recovery Hierarchy guided discussions on how they can prioritize actions to take to prevent & divert food waste. #NoWastedFood, #MyGreenIdea, [epa.gov/sustainable-ma...](https://epa.gov/sustainable-ma...)





## 2018 FRC Regional Award: FoodBridge (UEmpowerofMD)



- Online food rescue software
- Culinary skills training/job opportunities for southwest Baltimore youth



# Resources for Local Governments/Recycling Coordinators

[Please Endorse EPA's FRC](#)

[Reduce, Recover, Recycle-Food Waste in Prince George's County, MD](#)

[EPA's Excess Food Opportunities Mapping Tool](#)



# Resources for Local Governments/Recycling Coordinators

[FRC Award Winner's "Success Stories"](#)

[Further With Food](#)

[Northeast Recycling Council](#)



## For More Information

[www.epa.gov/foodrecoverychallenge](http://www.epa.gov/foodrecoverychallenge)

Luke Wolfgang

(215) 814-2913

[wolfgang.luke@epa.gov](mailto:wolfgang.luke@epa.gov)

## Mark Your Calendar!

MRN/SWANA Mid-Atlantic Annual Conference

Tuesday, June 11, 2019 – BWI Marriott

Not a Member? Join Today to Support Recycling in Maryland!

[www.marylandrecyclingnetwork.org](http://www.marylandrecyclingnetwork.org)

